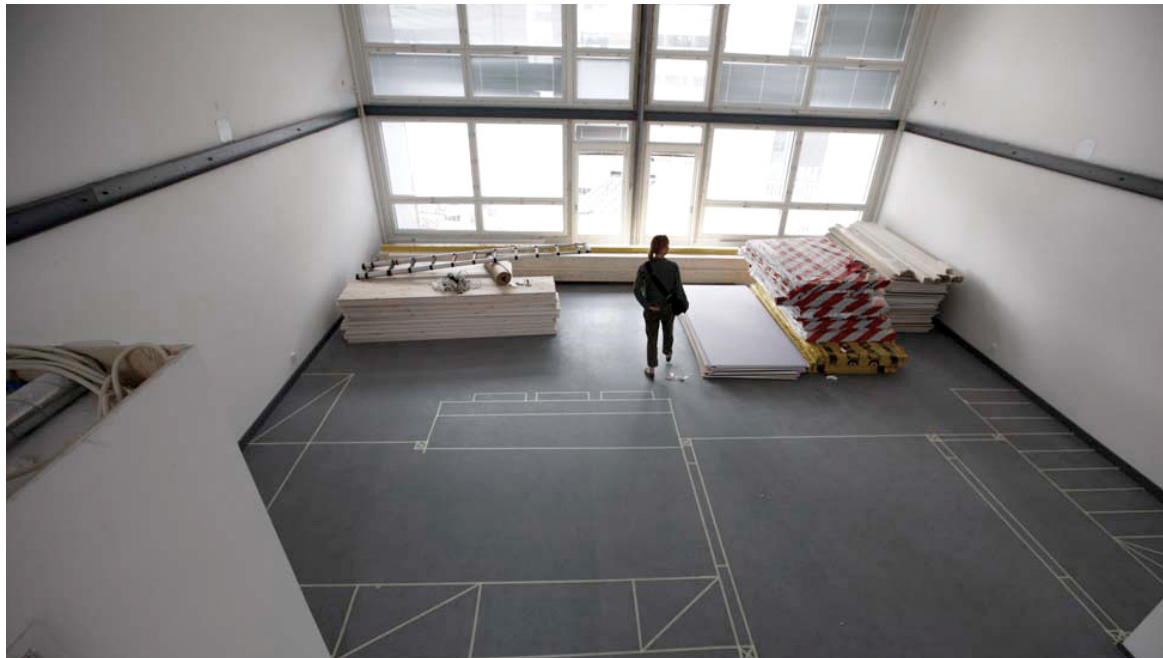


Tila - Neo-Loft apartments



The Tila housing block, comprising 39 loft apartments, is a pilot project for neo-loft apartments in Helsinki, Arabianranta. The concept is based on an open construction system: within the available building frame the resident determines and builds the required subdivisions. The flats are occupiable at the moment of purchase, but become completely habitable with the installation of kitchen furniture. The residents can build individual rooms or expand their flat with gallery-type spaces, because the height of the main space is five metres.

Start of Design

2004

Completion

Raw space 2008

Self-motivated construction 2009-

Type

Commission, Initiative

Programme

Housing

Client

Sato Oy

Size

GFA 3.050m² (+max 1.781m² gallery space)

FA 4.359m²

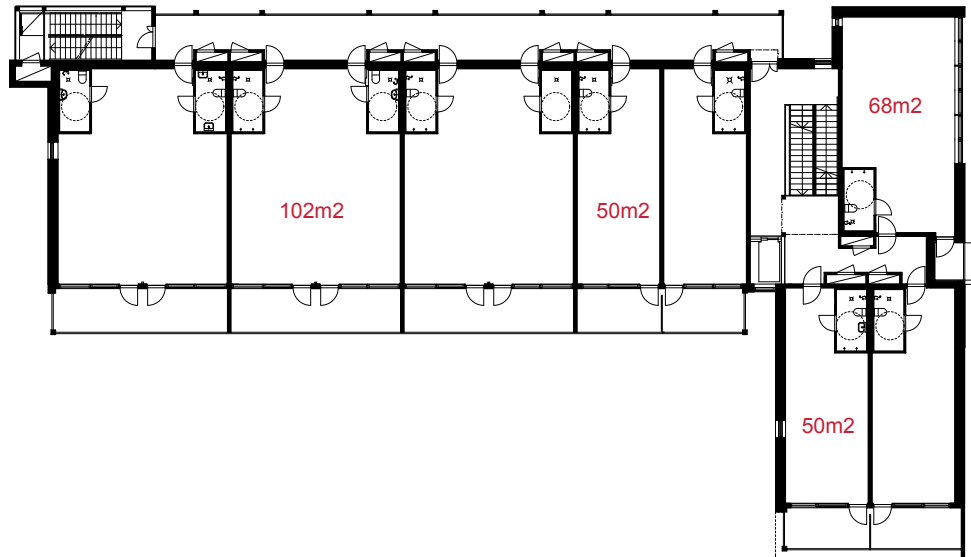
Location

Helsinki, Arabianranta

Contact

Pia Ilonen

pia.ilonen@talli.fi



2nd floor - apartments at moment of purchase



building section - apartments at moment of purchase



50m2 apartment at moment of purchase



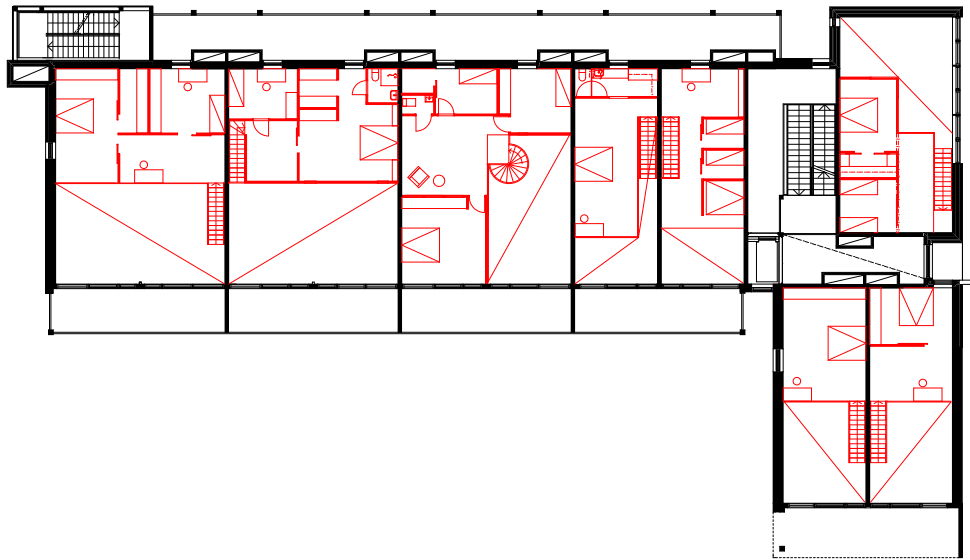
50m2 apartment at moment of purchase



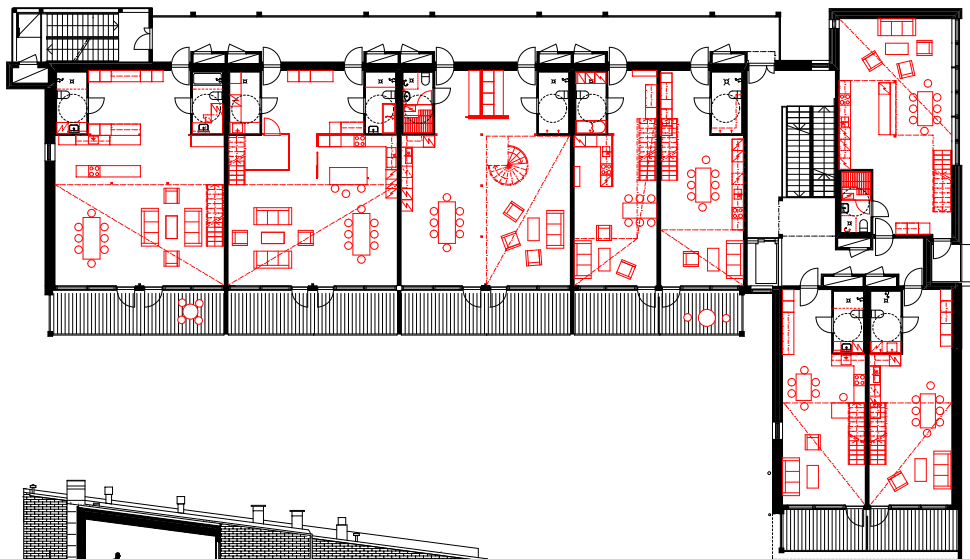
102m2 apartment at moment of purchase



102m2 apartment at moment of purchase



2nd floor mezzanine - infill by occupants



2nd floor - infill by occupants



building section - after individual infill by occupants



